

Relays

Micro relays

Characteristic quantities

Rated voltage (load and excitation circuit)	12 V	24 V
Operating voltage	8...16 V	17...27 V
Ambient temperature	-40...+100 °C	-40...+100 °C
Response voltage (at 20 °C)	≤ 8 V	≤ 17 V
Release voltage (at 20 °C)	≥ 1,5 V	≥ 3 V
Response time	≤ 10 ms	≤ 10 ms
Release time	≤ 15 ms	≤ 15 ms
Contact material	Silver tin oxide ¹⁾	Silver tin oxide
Voltage drop at NO contact in as-new condition	≤ 50 mV at 10 A	≤ 40 mV at 5 A
Voltage drop at NO contact after specified switching time	≤ 100 mV at 10 A	≤ 75 mV at 5 A
Voltage drop at NC contact in as-new condition	≤ 50 mV at 10 A	≤ 40 mV at 5 A
Voltage drop at NC contact after specified switching time	≤ 200 mV at 10 A	≤ 150 mV at 5 A
Degree of protection for housing and terminals, general (refer to Page 5)	IP 20	IP 20
Degree of protection for receptacle housing with connector installation position at bottom (refer to Page 5)	IP 5K4	IP 5K4

¹⁾ Hard silver for changeover relay, order number 0 332 207 304.

Relays

Micro relays

Make relay 12 V

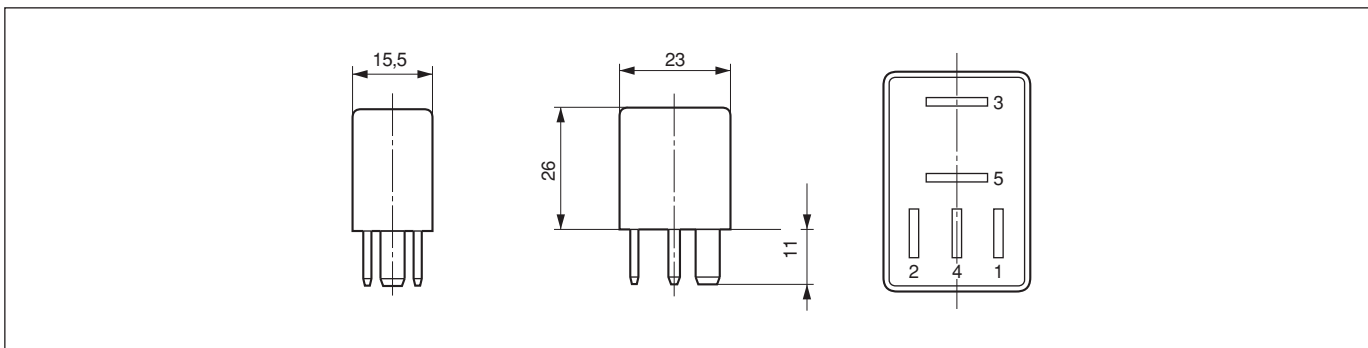
0 332 011 007

Technical data

Resistance load ¹⁾ - Make contact	A/thousand	30/≥100	22/≥200
Motor load ²⁾ - NO contact	A/A/Thousand	65/17/≥200	
Lamp load ¹⁾ - NO contact	A/Thousand	17/≥150	10/≥200
Exciter circuit total resistance	Ω		75±6

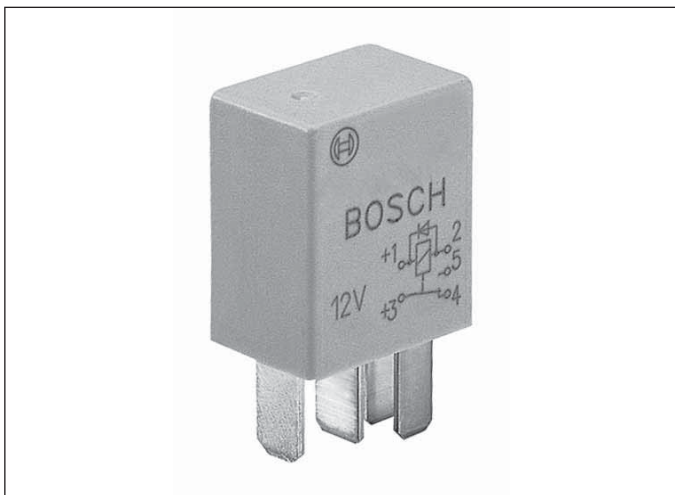
¹⁾ Switching current/no. of operations ²⁾ Making/continuous current/no. of operations

Dimensional drawing

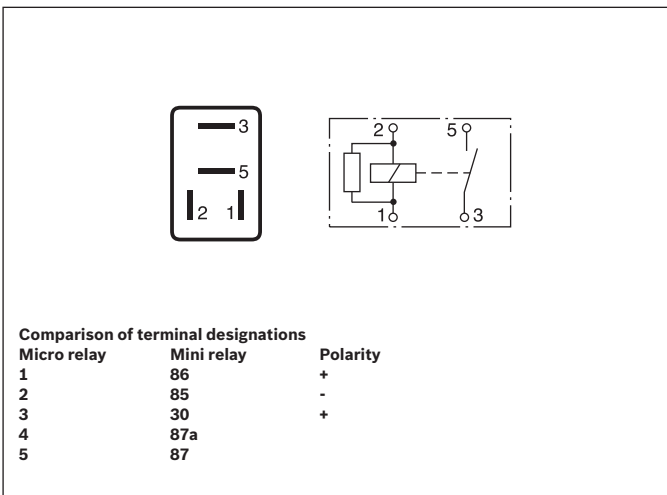


Blade terminal size to DIN 46 244, similar to ISO 8092: Terminal 1 and 2 (4): 4.8 x 0.8 mm; Terminal 3 and 5: 6.3 x 0.8 mm

Figure



Connection and circuit diagram



Relays

Micro relays

Make relay 12 V

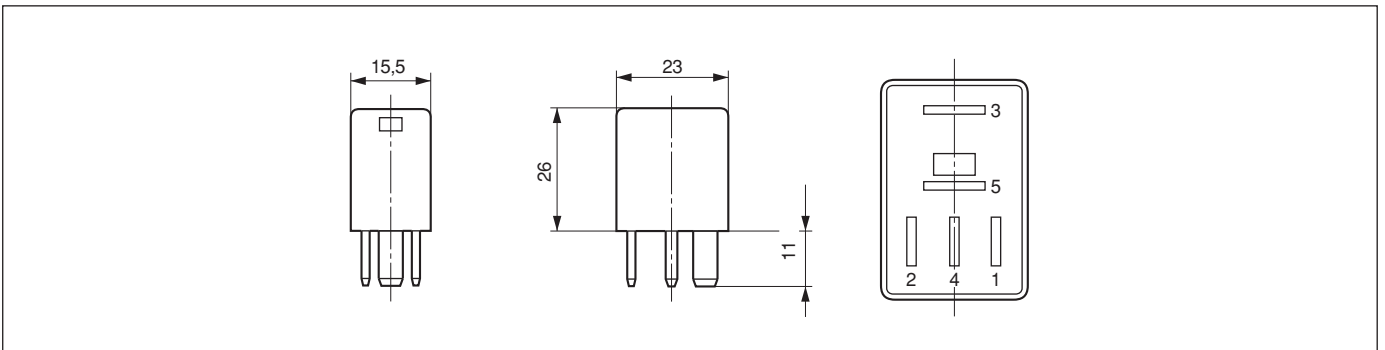
0 332 017 300

Technical data

Resistance load ¹⁾ - Make contact	A/thousand	20/≥300
Motor load ²⁾ - NO contact	A/A/Thousand	30/15/≥200
Lamp load ¹⁾ - NO contact	A/Thousand	20/≥150
Exciter circuit total resistance	Ω	78±6

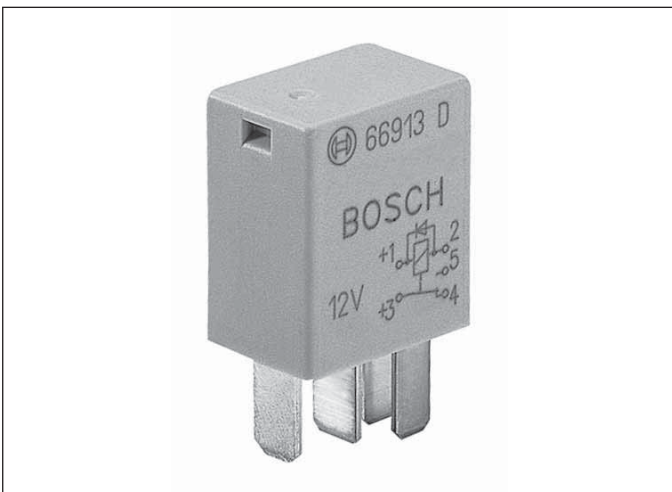
¹⁾ Switching current/no. of operations ²⁾ Making/continuous current/no. of operations

Dimensional drawing

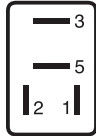
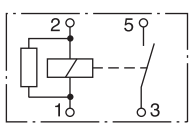


Blade terminal size to DIN 46 244, similar to ISO 8092: Terminal 1 and 2 (4): 4.8 x 0.8 mm; Terminal 3 and 5: 6.3 x 0.8 mm

Figure



Connection and circuit diagram

Comparison of terminal designations		
Micro relay	Mini relay	Polarity
1	86	+
2	85	-
3	30	+
4	87a	
5	87	

Relays

Micro relays

Make relay 12 V

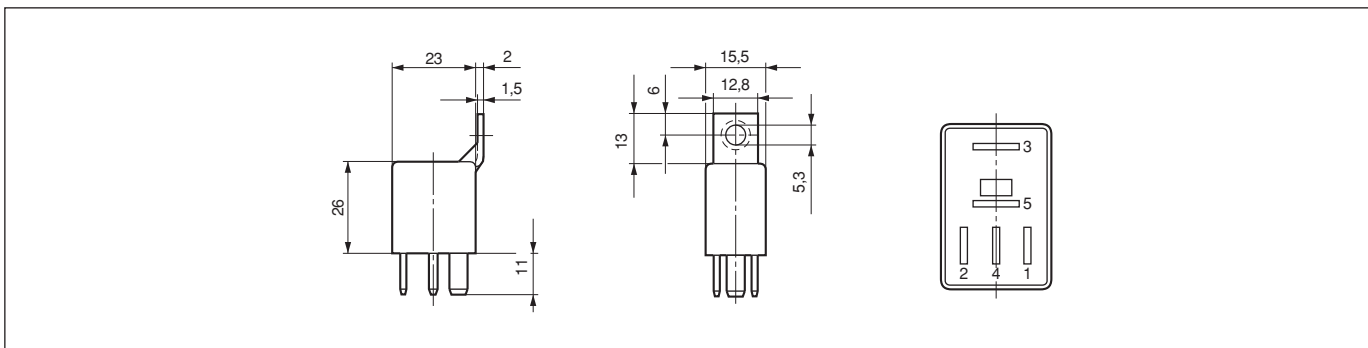
0 332 017 302

Technical data

Resistance load ¹⁾ - Make contact	A/thousand	20/≥300
Motor load ²⁾ - NO contact	A/A/Thousand	30/15/≥200
Lamp load ¹⁾ - NO contact	A/Thousand	20/≥150
Exciter circuit total resistance	Ω	78±6

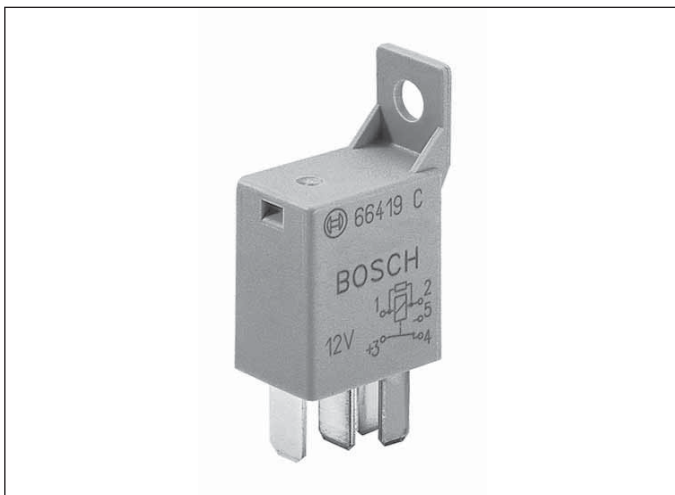
¹⁾ Switching current/no. of operations ²⁾ Making/continuous current/no. of operations

Dimensional drawing



Blade terminal size to DIN 46 244, similar to ISO 8092: Terminal 1 and 2 (4): 4.8 x 0.8 mm; Terminal 3 and 5: 6.3 x 0.8 mm

Figure



Connection and circuit diagram

The diagram shows a terminal block with terminals 1, 2, 3, 4, and 5. Terminal 1 is the coil (-), terminal 2 is the coil (+), terminal 3 is the common contact, terminal 4 is the normally closed contact, and terminal 5 is the normally open contact. A circuit diagram shows the coil connected between terminals 1 and 2, and the contacts connected between terminals 3, 4, and 5.

Micro relay	Mini relay	Polarity
1	86	+
2	85	-
3	30	+
4	87a	
5	87	

Relays

Micro relays

Changeover relay 12V

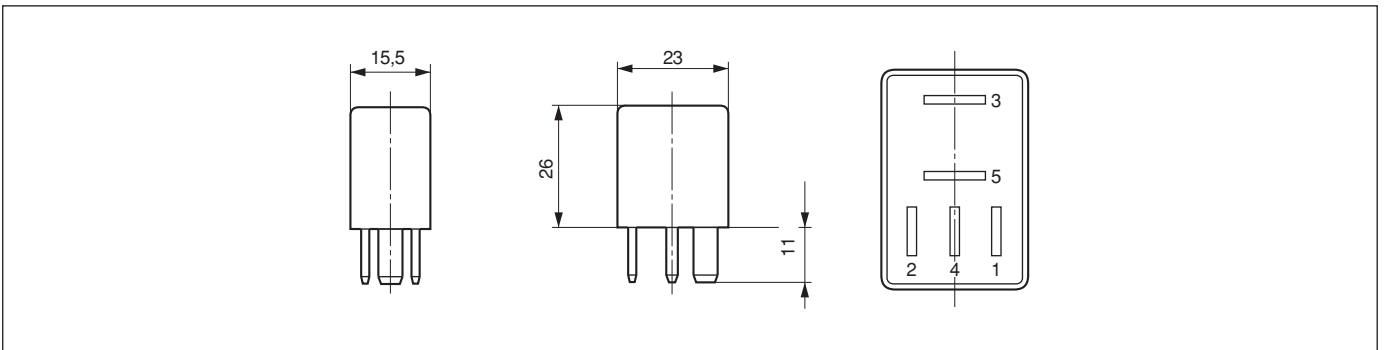
0 332 201 107

Technical data

Resistive load ¹⁾ - NO contact	A/Thousand	30/≥100	22/≥200
Resistive load ¹⁾ - NC contact	A/Thousand	10/≥100	5/≥200
Motor load ²⁾ - NO contact	A/A/Thousand	65/17/≥200	30/7/≥200
Lamp load ¹⁾ - NO contact	A/Thousand	17/≥150	10/≥200
Lamp load ¹⁾ - NC contact	A/Thousand	10/≥150	3,5/≥200
Exciter circuit total resistance	Ω		75±6

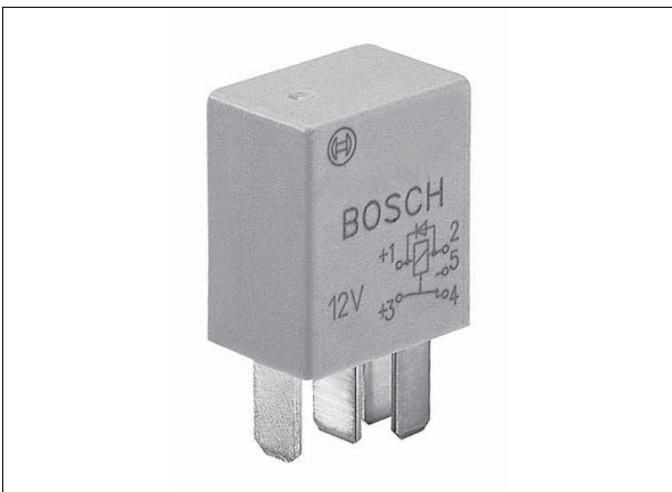
¹⁾ Switching current/no. of operations ²⁾ Making/continuous current/no. of operations

Dimensional drawing


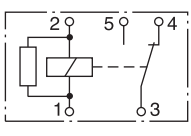


Blade terminal size to DIN 46 244, similar to ISO 8092: Terminal 1 and 2 (4): 4.8 x 0.8 mm; Terminal 3 and 5: 6.3 x 0.8 mm

Figure



Connection and circuit diagram

Comparison of terminal designations		
Micro relay	Mini relay	Polarity
1	86	+
2	85	-
3	30	+
4	87a	
5	87	

Relays

Micro relays

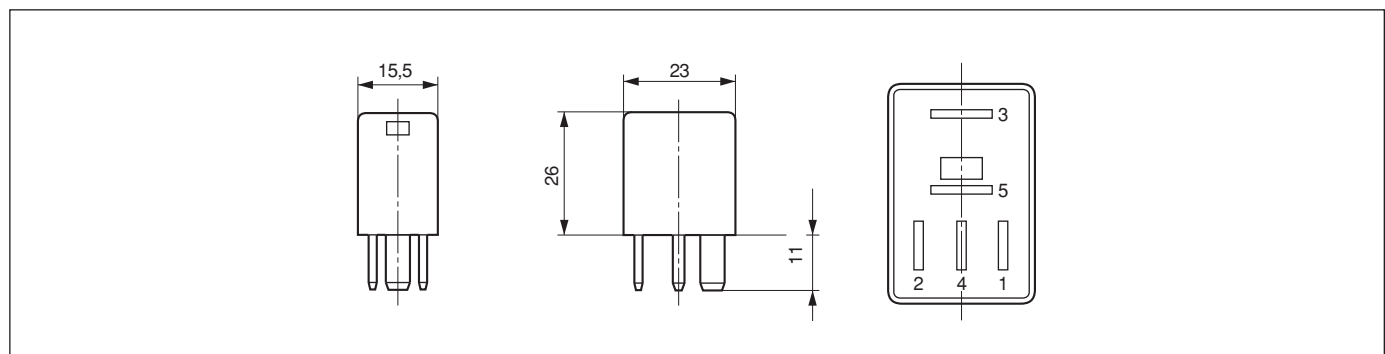
Changeover relay 12V

0 332 207 304

Technical data				
Resistive load ¹⁾ - NO contact	A/Thousand	20/≥100	16/≥200	10/≥500
Resistive load ¹⁾ - NC contact	A/Thousand	10/≥125	5/≥250	
Motor load ²⁾ - NO contact	A/A/Thousand	35/20/≥100		
Exciter circuit total resistance	Ω			88±6

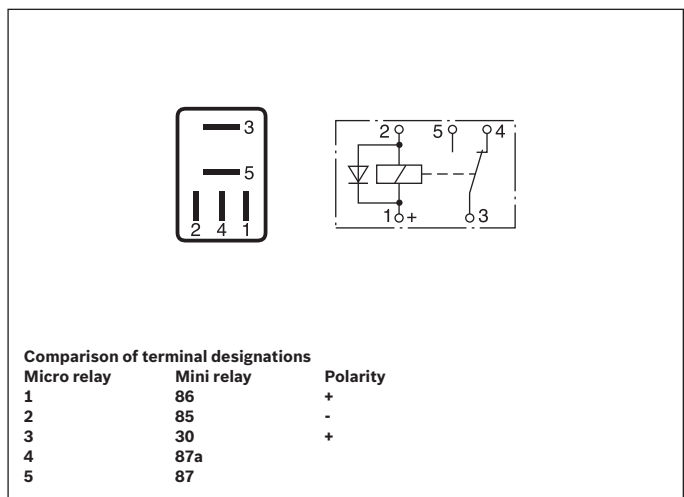
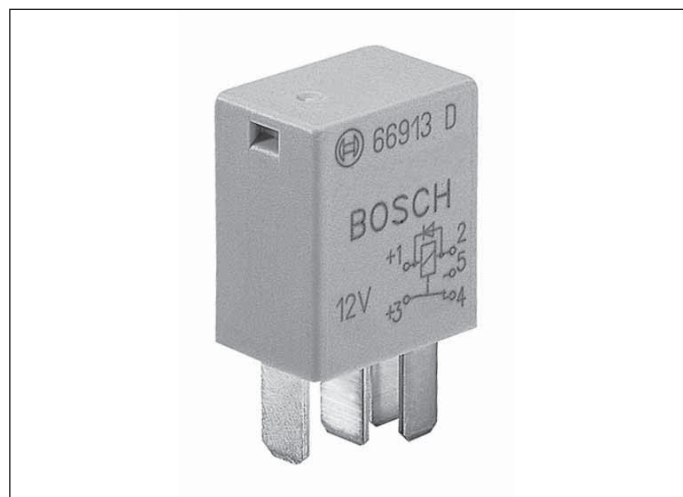
¹⁾ Switching current/no. of operations ²⁾ Making/continuous current/no. of operations

Dimensional drawing



Blade terminal size to DIN 46 244, similar to ISO 8092: Terminal 1 and 2 (4): 4.8 x 0.8 mm; Terminal 3 and 5: 6.3 x 0.8 mm

Figure Connection and circuit diagram



Relays

Micro relays

Changeover relay 12V

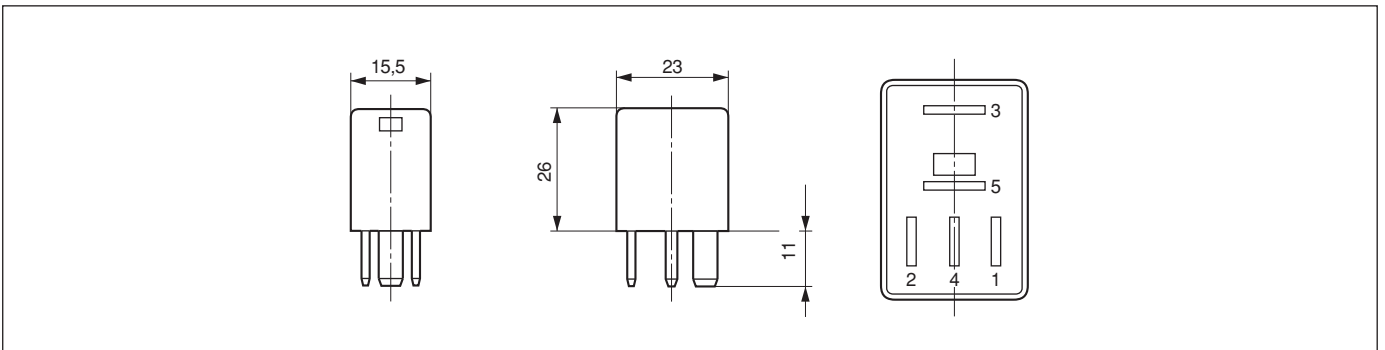
0 332 207 307

Technical data

Resistive load ¹⁾ - NO contact	A/Thousand	20/≥300
Resistive load ¹⁾ - NC contact	A/Thousand	10/≥150
Motor load ²⁾ - NO contact	A/A/Thousand	30/15/≥200
Lamp load ¹⁾ - NO contact	A/Thousand	20/≥150
Lamp load ¹⁾ - NC contact	A/Thousand	10/≥75
Exciter circuit total resistance	Ω	78±6

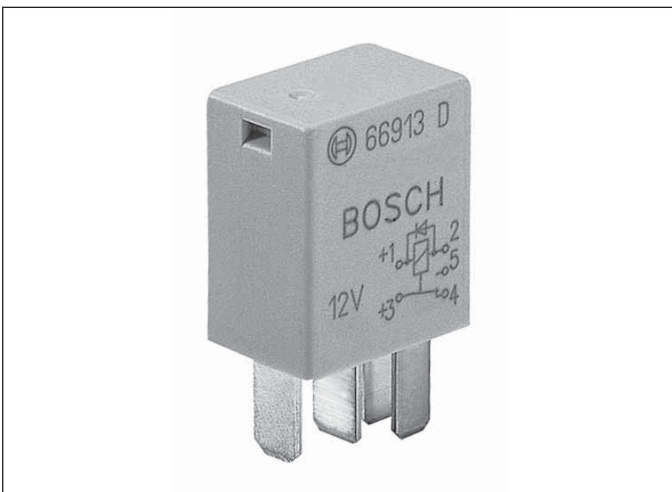
¹⁾ Switching current/no. of operations ²⁾ Making/continuous current/no. of operations

Dimensional drawing


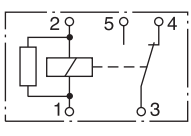


Blade terminal size to DIN 46 244, similar to ISO 8092: Terminal 1 and 2 (4): 4.8 x 0.8 mm; Terminal 3 and 5: 6.3 x 0.8 mm

Figure



Connection and circuit diagram

Comparison of terminal designations		
Micro relay	Mini relay	Polarity
1	86	+
2	85	-
3	30	+
4	87a	
5	87	

Relays

Micro relays

Changeover relay 12 V

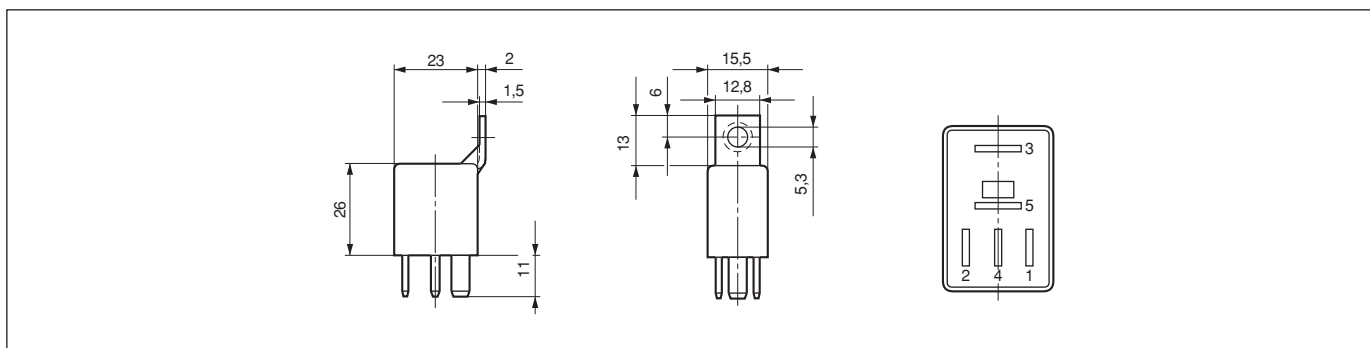
0 332 207 310

Technical data

Resistive load ¹⁾ - NO contact	A/Thousand	20/≥300
Resistive load ¹⁾ - NC contact	A/Thousand	10/≥150
Motor load ²⁾ - NO contact	A/A/Thousand	30/15/≥200
Lamp load ¹⁾ - NO contact	A/Thousand	20/≥150
Lamp load ¹⁾ - NC contact	A/Thousand	10/≥75
Exciter circuit total resistance	Ω	78±6

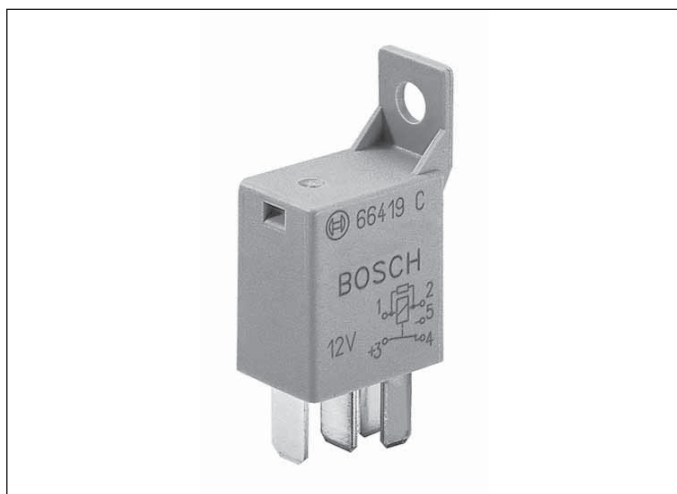
¹⁾ Switching current/no. of operations ²⁾ Making/continuous current/no. of operations

Dimensional drawing

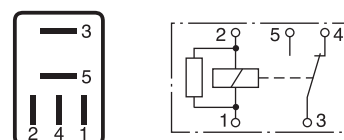


Blade terminal size to DIN 46 244, similar to ISO 8092: Terminal 1 and 2 (4): 4.8 x 0.8 mm; Terminal 3 and 5: 6.3 x 0.8 mm

Figure



Connection and circuit diagram



Comparison of terminal designations		
Micro relay	Mini relay	Polarity
1	86	+
2	85	-
3	30	+
4	87a	
5	87	

Relays

Micro relays

Changeover relay 24V

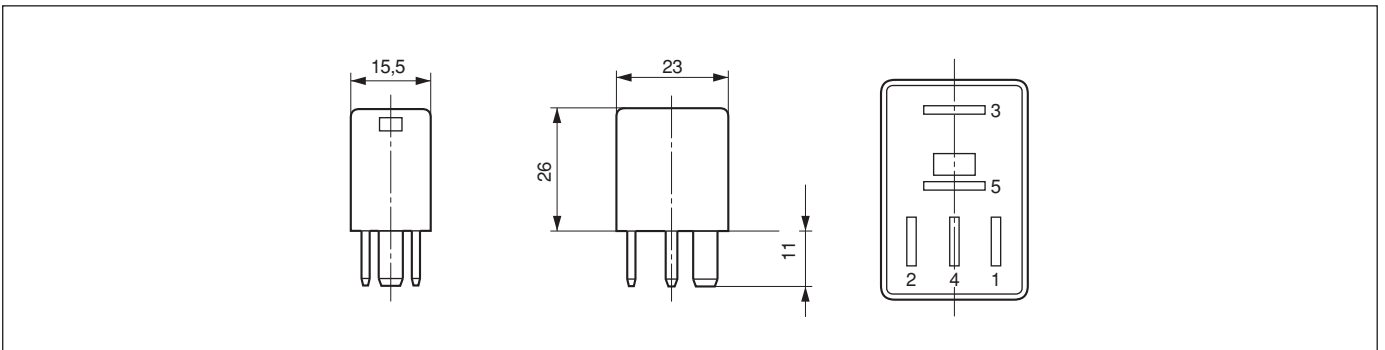
0 332 207 402

Technical data

Resistive load ¹⁾ - NO contact	A/Thousand	10/≥250
Resistive load ¹⁾ - NC contact	A/Thousand	5/≥250
Exciter circuit total resistance	Ω	410±20

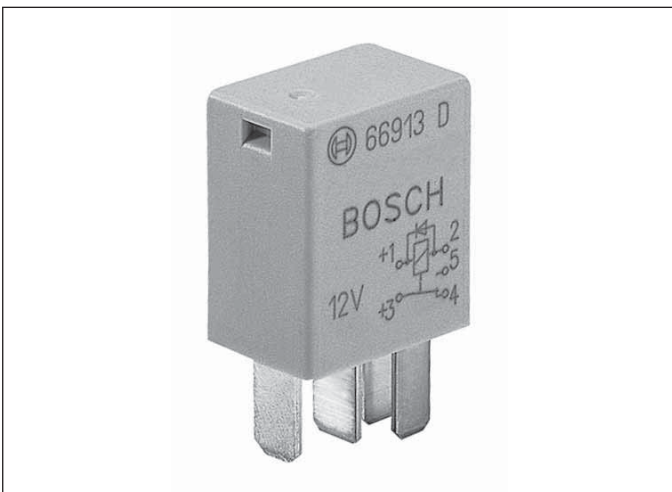
¹⁾ Switching current/no. of operations ²⁾ Making/continuous current/no. of operations

Dimensional drawing


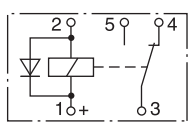


Blade terminal size to DIN 46 244, similar to ISO 8092: Terminal 1 and 2 (4): 4.8 x 0.8 mm; Terminal 3 and 5: 6.3 x 0.8 mm

Figure



Connection and circuit diagram

Micro relay	Mini relay	Polarity
1	86	+
2	85	-
3	30	+
4	87a	
5	87	

Relays

Micro relays

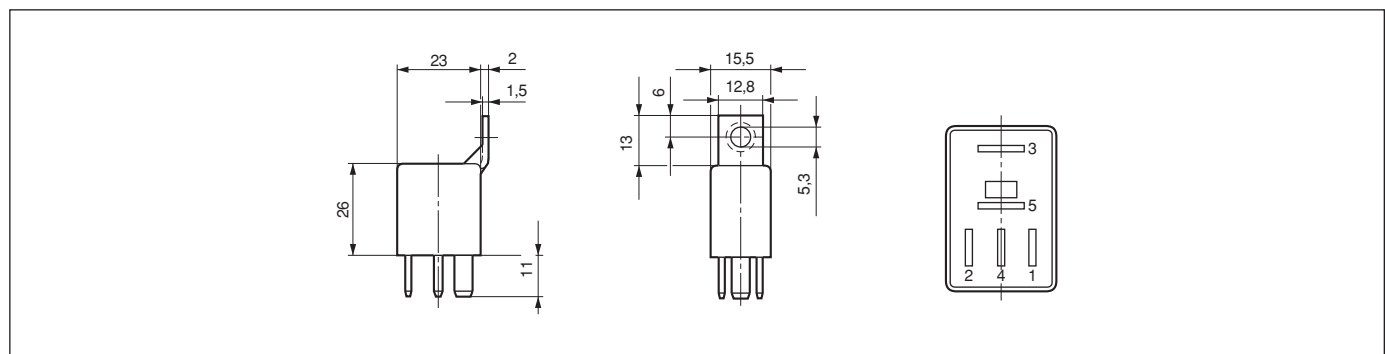
Changeover relay 24 V

0 332 207 404

Technical data		
Resistive load ¹⁾ - NO contact	A/Thousand	10/≥250
Resistive load ¹⁾ - NC contact	A/Thousand	5/≥250
Exciter circuit total resistance	Ω	335±20

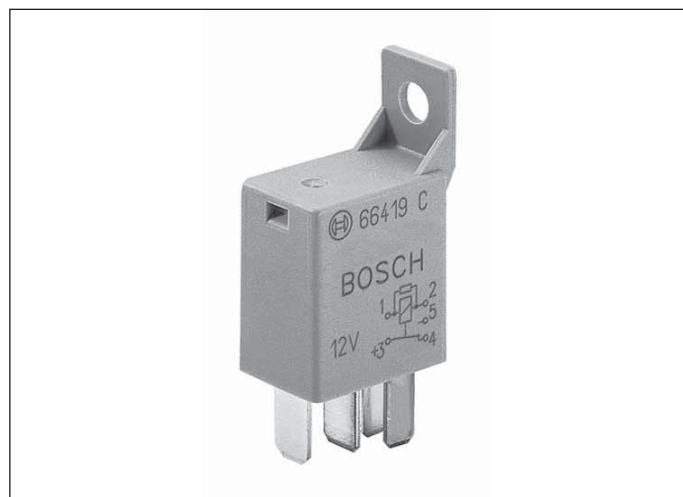
¹⁾ Switching current/no. of operations ²⁾ Making/continuous current/no. of operations

Dimensional drawing



Blade terminal size to DIN 46 244, similar to ISO 8092: Terminal 1 and 2 (4): 4.8 x 0.8 mm; Terminal 3 and 5: 6.3 x 0.8 mm

Figure Connection and circuit diagram



The diagram shows the terminal layout (terminals 1, 2, 3, 4, 5) and a circuit diagram. The circuit diagram shows a coil connected between terminals 1 and 2, and a switch with a normally open (NO) contact between terminals 3 and 4, and a normally closed (NC) contact between terminals 5 and 1.

Comparison of terminal designations		
Micro relay	Mini relay	Polarity
1	86	+
2	85	-
3	30	+
4	87a	
5	87	