

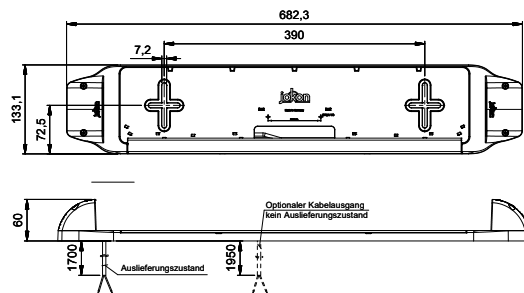
KENNZEICHEN-, NEBELSCHLUSSLEUCHTEN, RÜCKFAHRSCHEINWERFER
NUMBER PLATE LIGHTS, FOG LIGHTS, REVERSING LIGHTS



LED-KENNZEICHENHALTER KH 590b * LED NUMBER PLATE HOLDER 590b

Der Kennzeichenhalter verfügt über zwei integrierte LED-Kennzeichenleuchten, welche über ein Anschlusskabel (vorverkabelt) angeschlossen werden. Eine individualisierbare Klemmleiste erlaubt eine kundenspezifische Beschriftung/Werbung. Der Kennzeichenhalter ist für Kennzeichen mit den Abmessungen 520 x 120 mm verwendbar. Auch die für Frankreich geforderte Befestigung durch Nieten ist vorgesehen.

The license-plate holder has two integrated LED license plate lights, which are connected via cable (pre-wired). A customizable terminal strip allows a customer-specific inscription/advertising. The license-plate holder can be used for license plates with the dimensions 520 x 120 mm. The fastening by rivets required for France is also provided.

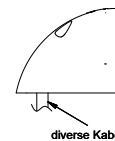
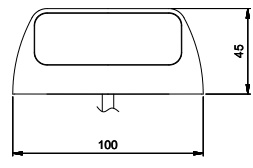
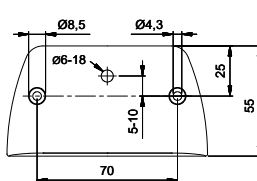
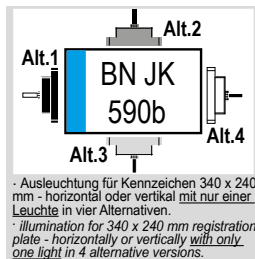
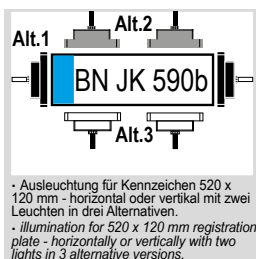


- Ingeriertes Y-Kabel (variabel 1700 - 1950 mm)
- Klemmleiste kundenspezifisch individualisierbar
- Sehr kompaktes und attraktives Design
- Aufbau oder (vertiefter) Einbau
- integrated Y-cable (variable 1700 - 1950 mm)
- customizable clamping element
- compact and attractive design
- designed for surface or (recessed) flush mounting

Bild Picture	Art.-Nr. / No. Typ / Type	Beschreibung Description	Merkmale Features	Spann. Voltage	Leistung Power	Material / Farbe Material / Colour	Anschluss Connection	Gewicht Weight	IP / Temp. IP / Temp.	VP PU	Homolog. Approval
	13.4018.100 KH 590b/9-32V	LED-Kennzeichenhalter LED-Number plate holder	Leuchten integriert integrated lights	9-32 V	1 + 1 W	ABS / PC+PC schwarz / black	Y-Kabel 2000 mm y-cable 2000 mm	0,5 kg	-20 / +50°C IP 6K9K	20	E13-12343 EMV / EMC

LED-KENNZEICHENLEUCHE K 590b * LED NUMBER PLATE LIGHT K 590b

LED-Kennzeichenleuchte mit 200 mm Anschlusskabel für die Aufbau-Montage, variable Anbaupositionen.
LED-license plate light with 200 mm connection cable for surface-mounting, variable mounting positions.

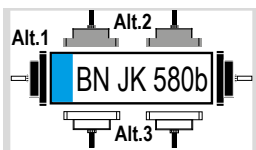


- Aufbau-Montage
- Wasserdicht vergossen
- surface mounting
- waterproof sealed

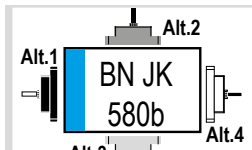
Bild Picture	Art.-Nr. / No. Typ / Type	Beschreibung Description	Merkmale Features	Spann. Voltage	Leistung Power	Material / Farbe Material / Colour	Anschluss Connection	Gewicht Weight	IP / Temp. IP / Temp.	VP PU	Homolog. Approval															
	13.4016.000 K 590b/9-32V	LED-Kennzeichenleuchte LED Number Plate Light	<table border="1"> <tr><td>BL</td><td>BR</td><td>S</td><td>W</td><td>SN</td><td>R</td><td>K</td><td>SM</td></tr> <tr><td>DI</td><td>ST</td><td>TL</td><td>RV</td><td>FL</td><td>RR</td><td>NP</td><td>SM</td></tr> </table>	BL	BR	S	W	SN	R	K	SM	DI	ST	TL	RV	FL	RR	NP	SM	9-32 V	1 W	PC / PC schwarz - black	Kabel 200 mm cable 200 mm	0,07 kg	IP 6K9K	50 E13-12343 EMV / EMC
BL	BR	S	W	SN	R	K	SM																			
DI	ST	TL	RV	FL	RR	NP	SM																			
	13.4016.100 K 590b/9-32V	LED-Kennzeichenleuchte LED Number Plate Light	<table border="1"> <tr><td>BL</td><td>BR</td><td>S</td><td>W</td><td>SN</td><td>R</td><td>K</td><td>SM</td></tr> <tr><td>DI</td><td>ST</td><td>TL</td><td>RV</td><td>FL</td><td>RR</td><td>NP</td><td>SM</td></tr> </table>	BL	BR	S	W	SN	R	K	SM	DI	ST	TL	RV	FL	RR	NP	SM	9-32 V	1 W	PC / PC schwarz - black	Kabel 1000 mm cable 1000 mm	0,09 kg	IP 6K9K	50 E13-12343 EMV / EMC
BL	BR	S	W	SN	R	K	SM																			
DI	ST	TL	RV	FL	RR	NP	SM																			
	13.4016.500 K 590b/9-32V	LED-Kennzeichenleuchte LED Number Plate Light	<table border="1"> <tr><td>BL</td><td>BR</td><td>S</td><td>W</td><td>SN</td><td>R</td><td>K</td><td>SM</td></tr> <tr><td>DI</td><td>ST</td><td>TL</td><td>RV</td><td>FL</td><td>RR</td><td>NP</td><td>SM</td></tr> </table>	BL	BR	S	W	SN	R	K	SM	DI	ST	TL	RV	FL	RR	NP	SM	9-32 V	1 W	PC / PC schwarz - black	Flachkabel 500 mm flat cable 500 mm	0,09 kg	IP 6K9K	50 E13-12343 EMV / EMC
BL	BR	S	W	SN	R	K	SM																			
DI	ST	TL	RV	FL	RR	NP	SM																			
	13.4016.600 K 590b/9-32V	LED-Kennzeichenleuchte LED Number Plate Light	<table border="1"> <tr><td>BL</td><td>BR</td><td>S</td><td>W</td><td>SN</td><td>R</td><td>K</td><td>SM</td></tr> <tr><td>DI</td><td>ST</td><td>TL</td><td>RV</td><td>FL</td><td>RR</td><td>NP</td><td>SM</td></tr> </table>	BL	BR	S	W	SN	R	K	SM	DI	ST	TL	RV	FL	RR	NP	SM	9-32 V	1 W	PC / PC schwarz - black	Flachkabel 1000 mm flat cable 1000 mm	0,12 kg	IP 6K9K	50 E13-12343 EMV / EMC
BL	BR	S	W	SN	R	K	SM																			
DI	ST	TL	RV	FL	RR	NP	SM																			

LED-KENNZEICHENLEUCHE K 580b * LED NUMBER PLATE LIGHT K 580b

LED-Kennzeichenleuchte mit 200 mm Anschlusskabel für die Einbau-Montage, variable Anbaupositionen.
LED-license plate light with 200 mm connection cable for flush-fitting, variable mounting positions.



- Ausleuchtung für Kennzeichen 520 x 120 mm - horizontal oder vertikal mit zwei Leuchten in drei Alternativen.
- illumination for 520 x 120 mm registration plate - horizontally or vertically with two lights in 3 alternative versions.



- Ausleuchtung für Kennzeichen 340 x 240 mm - horizontal oder vertikal mit nur einer Leuchte in vier Alternativen.
- illumination for 340 x 240 mm registration plate - horizontally or vertically with only one light in 4 alternative versions.



- Hochwertige LEDs von Marken-Herstellern (NICHIA).
- high quality LED's from branded manufacturers (NICHIA).

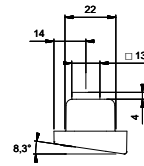
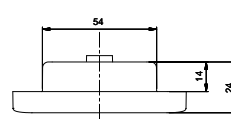
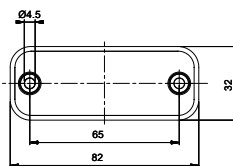


- Einzeleraderabdichtung für maximalen IP-Schutz und Funktionssicherheit.
- single conductor seal for maximum IP protection and functional safety.



- Gleichmäßige Ausleuchtung und homogenes Farbbild.
- even illumination and more uniform colour.

Technische Daten * Technical Data



- Einbau-Montage
- Wasserdicht vergossen

- flush fitting
- waterproof sealed

Bild Picture	Art.-Nr. / No. Typ / Type	Beschreibung Description	Merkmale Features	Spann. Voltage	Leistung Power	Material / Farbe Material / Colour	Anschluss Connection	Gewicht Weight	IP / Temp. IP / Temp.	VP PU	Homolog. Approval																	
	13.4015.000 K 580b/9-32V	LED-Kennzeichenleuchte LED Number Plate Light	<table border="1"> <tr> <td>BL</td><td>BR</td><td>S</td><td>W</td><td>SN</td><td>R</td><td>K</td><td>FL</td><td>SM</td> </tr> <tr> <td>DI</td><td>ST</td><td>TL</td><td>RV</td><td>FL</td><td>RR</td><td>NP</td><td>PL</td><td>SM</td> </tr> </table>	BL	BR	S	W	SN	R	K	FL	SM	DI	ST	TL	RV	FL	RR	NP	PL	SM	9-32V	1 W	PMMA / ABS schwarz - black	Kabel 200 mm cable 200 mm	0,03 kg	IP 6K9K	50 E2-06020 EMV / EMC
BL	BR	S	W	SN	R	K	FL	SM																				
DI	ST	TL	RV	FL	RR	NP	PL	SM																				

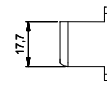
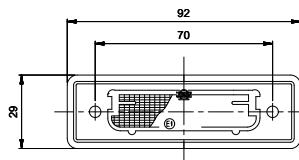
LED-KENNZEICHENLEUCHE K 575 * LED NUMBER PLATE LIGHT K 575

Die sehr kompakte LED-Kennzeichenleuchte K 575 ermöglicht den „Plug and Play“ Austausch der Glühlampenleuchte K 570 bei gleichen Abmessungen. Ein hervorragendes Preis-/Leistungsverhältnis unterstützt die Aufrüstung zur LED-Technik.

The very compact K 575 LED number plate light allows „plug n play“ replacement of the K 570 bulb light with the same dimensions. An excellent price/performance ratio supports the upgrade to LED technology.



In Vorbereitung
in preparation



- Einbau-Montage
- Wasserdicht vergossen und anschlussfertig

- flush fitting
- sealed in a waterproofed manner and ready for plug-in

Bild Picture	Art.-Nr. / No. Typ / Type	Beschreibung Description	Merkmale Features	Spann. Voltage	Leistung Power	Material / Farbe Material / Colour	Anschluss Connection	Gewicht Weight	IP / Temp. IP / Temp.	VP PU	Homolog. Approval															
	13.4019.000 K 575/12V	LED-Kennzeichenleuchte LED Number Plate Light	<table border="1"> <tr> <td>BL</td><td>BR</td><td>S</td><td>W</td><td>SN</td><td>R</td><td>K</td><td>FL</td> </tr> <tr> <td>DI</td><td>ST</td><td>TL</td><td>RV</td><td>FL</td><td>RR</td><td>NP</td><td>PL</td> </tr> </table>	BL	BR	S	W	SN	R	K	FL	DI	ST	TL	RV	FL	RR	NP	PL	12 V			Kabel 200 mm cable 200 mm		IP 67	
BL	BR	S	W	SN	R	K	FL																			
DI	ST	TL	RV	FL	RR	NP	PL																			

KENNZEICHENLEUCHE K 415 * NUMBER PLATE LIGHT K 415

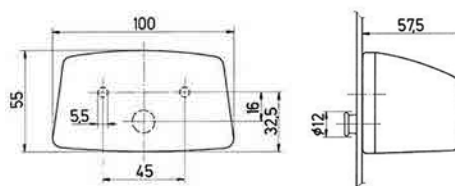


Bild Picture	Art.-Nr. / No. Typ / Type	Beschreibung Description	Merkmale Features	Spann. Voltage	Leistung Power	Material / Farbe Material / Colour	Anschluss Connection	Gewicht Weight	IP / Temp. IP / Temp.	VP PU	Homolog. Approval																
	13.4006.100 K 415	Kennzeichenleuchte Number Plate Light	<table border="1"> <tr> <td>BL</td><td>BR</td><td>S</td><td>W</td><td>SN</td><td>R</td><td>K</td><td>SM</td> </tr> <tr> <td>DI</td><td>ST</td><td>TL</td><td>RV</td><td>FL</td><td>RR</td><td>NP</td><td>SM</td> </tr> </table>	BL	BR	S	W	SN	R	K	SM	DI	ST	TL	RV	FL	RR	NP	SM	12 V	R 10 W	PMMA / ABS schwarz - black	Flachsteckungen blade terminals	0,08 kg		10 E/90	E1-22838
BL	BR	S	W	SN	R	K	SM																				
DI	ST	TL	RV	FL	RR	NP	SM																				

Zubehör / Ersatzteile * Accessories / Spare parts

	19.1032.100 E/K 415	Ersatzlichtscheibe Replacement Lens				PMMA schwarz - black		0,03 kg		10 E/90	E1-22838
--	-------------------------------	--	--	--	--	-------------------------	--	---------	--	------------	----------

KENNZEICHENLEUCHE K 158 * NUMBER PLATE LIGHT K 158

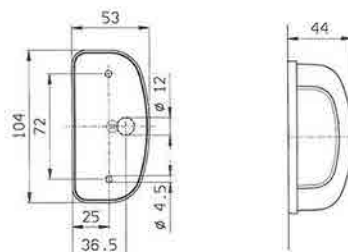


Bild Picture	Art.-Nr. / No. Typ / Type	Beschreibung Description	Merkmale Features	Spann. Voltage	Leistung Power	Material / Farbe Material / Colour	Anschluss Connection	Gewicht Weight	IP / Temp. IP / Temp.	VP PU	Homolog. Approval																
	13.4002.100 K 158	Kennzeichenleuchte Number Plate Light	<table border="1"> <tr> <td>BL</td><td>BR</td><td>S</td><td>W</td><td>SN</td><td>R</td><td>K</td><td>SM</td> </tr> <tr> <td>DI</td><td>ST</td><td>TL</td><td>RV</td><td>FL</td><td>RR</td><td>NP</td><td>SM</td> </tr> </table>	BL	BR	S	W	SN	R	K	SM	DI	ST	TL	RV	FL	RR	NP	SM	12 V	C 5 W	PMMA / ABS schwarz - black	Flachsteckungen blade terminals	0,08 kg		10 E/75	E1-22813
BL	BR	S	W	SN	R	K	SM																				
DI	ST	TL	RV	FL	RR	NP	SM																				

Zusatz-Information:
Additional Information: Aufbau-Montage
surface mounting

	13.4002.110 K 158/1	Kennzeichenleuchte Number Plate Light	<table border="1"> <tr> <td>BL</td><td>BR</td><td>S</td><td>W</td><td>SN</td><td>R</td><td>K</td><td>SM</td> </tr> <tr> <td>DI</td><td>ST</td><td>TL</td><td>RV</td><td>FL</td><td>RR</td><td>NP</td><td>SM</td> </tr> </table>	BL	BR	S	W	SN	R	K	SM	DI	ST	TL	RV	FL	RR	NP	SM	12 V	C 5 W	PMMA / ABS schwarz - black	Flachsteckungen blade terminals	0,08 kg		10 E/50	E1-22813
BL	BR	S	W	SN	R	K	SM																				
DI	ST	TL	RV	FL	RR	NP	SM																				

Zusatz-Information:
Additional Information: Aufbau-Montage / mit Abstandssockel
surface mounting / with adaptor

KENNZEICHENLEUCHE K 420 * NUMBER PLATE LIGHT K 420

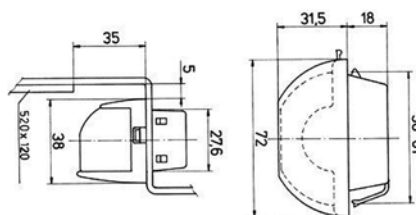
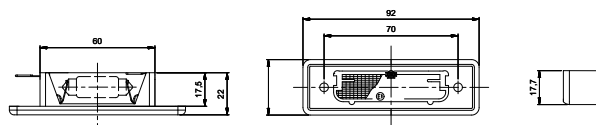


Bild Picture	Art.-Nr. / No. Typ / Type	Beschreibung Description	Merkmale Features	Spann. Voltage	Leistung Power	Material / Farbe Material / Colour	Anschluss Connection	Gewicht Weight	IP / Temp. IP / Temp.	VP PU	Homolog. Approval																
	13.4007.101 K 420	Kennzeichenleuchte Number Plate Light	<table border="1"> <tr> <td>BL</td><td>BR</td><td>S</td><td>W</td><td>SN</td><td>R</td><td>K</td><td>SM</td> </tr> <tr> <td>DI</td><td>ST</td><td>TL</td><td>RV</td><td>FL</td><td>RR</td><td>NP</td><td>SM</td> </tr> </table>	BL	BR	S	W	SN	R	K	SM	DI	ST	TL	RV	FL	RR	NP	SM	12 V	R 10 W	PC / PC schwarz - black	Flachsteckungen blade terminals	0,04 kg		40 E/180	E1-22839
BL	BR	S	W	SN	R	K	SM																				
DI	ST	TL	RV	FL	RR	NP	SM																				

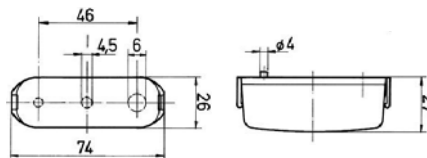
KENNZEICHENLEUCHE K 570 * NUMBER PLATE LIGHT K 570

Sehr kompakte Kennzeichenleuchte für die Einbau-Montage.
Very compact license plate light for flush-fitting.



· Variable Anbaupositionen				· variable mounting positions																							
Bild Picture	Art.-Nr. / No. Typ / Type	Beschreibung Description	Merkmale Features	Spann. Voltage	Leistung Power	Material / Farbe Material / Colour	Anschluss Connection	Gewicht Weight	IP / Temp. IP / Temp.	VP PU	Homolog. Approval																
	13.4008.100 K 570	Kennzeichenleuchte / links Number Plate Light / LH	<table border="1"> <tr><td>BL</td><td>BR</td><td>S</td><td>W</td><td>SN</td><td>R</td><td>K</td><td>SM</td></tr> <tr><td>DI</td><td>ST</td><td>TL</td><td>RV</td><td>FL</td><td>RR</td><td>NP</td><td>SM</td></tr> </table>	BL	BR	S	W	SN	R	K	SM	DI	ST	TL	RV	FL	RR	NP	SM	12 - 24 V	C 5 W	PC schwarz - black	Flachsteckungen blade terminals	0,02 kg		50 E/180	E1-22872
	BL	BR	S	W	SN	R	K	SM																			
DI	ST	TL	RV	FL	RR	NP	SM																				
13.4008.110 K 570	Kennzeichenleuchte / rechts Number Plate Light / RH	<table border="1"> <tr><td>BL</td><td>BR</td><td>S</td><td>W</td><td>SN</td><td>R</td><td>K</td><td>SM</td></tr> <tr><td>DI</td><td>ST</td><td>TL</td><td>RV</td><td>FL</td><td>RR</td><td>NP</td><td>SM</td></tr> </table>	BL	BR	S	W	SN	R	K	SM	DI	ST	TL	RV	FL	RR	NP	SM	12 - 24 V	C 5 W	PC schwarz - black	Flachsteckungen blade terminals	0,02 kg		50 E/180	E1-22872	
BL	BR	S	W	SN	R	K	SM																				
DI	ST	TL	RV	FL	RR	NP	SM																				

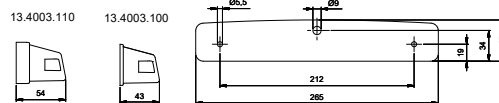
KENNZEICHENLEUCHE K 97 * NUMBER PLATE LIGHT 97



· Aufbau-Montage · Glühlampe in Soffittenform				· surface mounting · festoon-type bulb																							
Bild Picture	Art.-Nr. / No. Typ / Type	Beschreibung Description	Merkmale Features	Spann. Voltage	Leistung Power	Material / Farbe Material / Colour	Anschluss Connection	Gewicht Weight	IP / Temp. IP / Temp.	VP PU	Homolog. Approval																
	13.4001.101 K 97 s	Kennzeichenleuchte Number Plate Light	<table border="1"> <tr><td>BL</td><td>BR</td><td>S</td><td>W</td><td>SN</td><td>R</td><td>K</td><td>SM</td></tr> <tr><td>DI</td><td>ST</td><td>TL</td><td>RV</td><td>FL</td><td>RR</td><td>NP</td><td>SM</td></tr> </table>	BL	BR	S	W	SN	R	K	SM	DI	ST	TL	RV	FL	RR	NP	SM	12 V	C 5 W	PC / PC silber - silver	Schraubanschluss screw terminals	0,02 kg		50 E/180	E1-12998*
BL	BR	S	W	SN	R	K	SM																				
DI	ST	TL	RV	FL	RR	NP	SM																				

* = für neue Fahrzeug-Homologationen nicht einsetzbar / cannot be used for new vehicle approvals

KENNZEICHENLEUCHE K 307/308 * NUMBER PLATE LIGHT K 307/308



· Aufbau-Montage · Silberfarbiges Gehäuse · Glühlampen in Soffittenform				· surface mounting · silver-coloured housing · festoon-type bulbs																							
Bild Picture	Art.-Nr. / No. Typ / Type	Beschreibung Description	Merkmale Features	Spann. Voltage	Leistung Power	Material / Farbe Material / Colour	Anschluss Connection	Gewicht Weight	IP / Temp. IP / Temp.	VP PU	Homolog. Approval																
	13.4003.100 K 307	Kennzeichenleuchte Number Plate Light	<table border="1"> <tr><td>BL</td><td>BR</td><td>S</td><td>W</td><td>SN</td><td>R</td><td>K</td><td>SM</td></tr> <tr><td>DI</td><td>ST</td><td>TL</td><td>RV</td><td>FL</td><td>RR</td><td>NP</td><td>SM</td></tr> </table>	BL	BR	S	W	SN	R	K	SM	DI	ST	TL	RV	FL	RR	NP	SM	12 V	2 x C 5 W	PMMA / ABS silber - silver	Flachsteckungen blade terminals	0,17 kg		20	E1-22817
BL	BR	S	W	SN	R	K	SM																				
DI	ST	TL	RV	FL	RR	NP	SM																				
	13.4003.110 K 308	Kennzeichenleuchte Number Plate Light	<table border="1"> <tr><td>BL</td><td>BR</td><td>S</td><td>W</td><td>SN</td><td>R</td><td>K</td><td>SM</td></tr> <tr><td>DI</td><td>ST</td><td>TL</td><td>RV</td><td>FL</td><td>RR</td><td>NP</td><td>SM</td></tr> </table>	BL	BR	S	W	SN	R	K	SM	DI	ST	TL	RV	FL	RR	NP	SM	12 V	2 x C 5 W	PMMA / ABS silber - silver	Flachsteckungen blade terminals	0,20 kg		10	E1-22817
BL	BR	S	W	SN	R	K	SM																				
DI	ST	TL	RV	FL	RR	NP	SM																				

Zusatz-Information:
Additional Information:

mit Abstandsockel
with adaptor