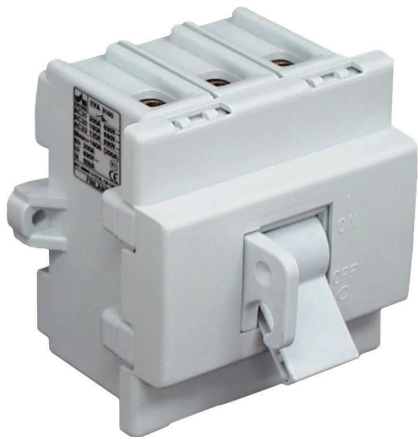


## LOAD BREAK SWITCHES 125-250 A TOGGLE SWITCHES, EVA SERIES



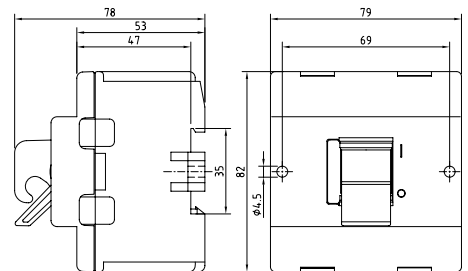
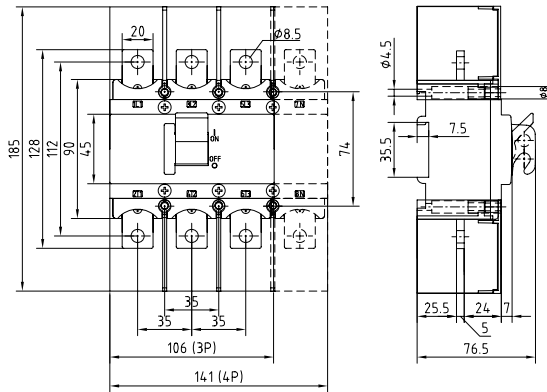
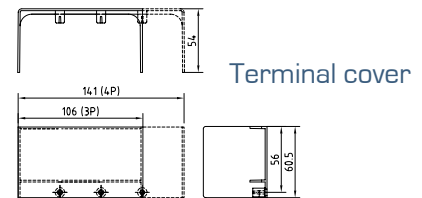
- Compact size
- Switch technology by means of silver contacts ensures a long life expectancy and safe use in demanding conditions

### 125-160 A:

- Available also with yellow front plate and red toggle (Y/R)

### 200-250 A:

- 3-pole and 4-pole
- Available with terminal covers and phase barriers (LS/Vs)
- Available also with red toggle (R)



Type	AC-21		AC-22	AC-23		EAN-Code	Weight kg
	400 V	415 V		400 V	415 V		
	Ie / A		Ie / A		P / kW	6419410...	
EVA 3125+K/EVA	160 A		-		45 kW	...202517	0.51
EVA 3160+K/EVA	200 A		160 A		55 kW	...203019	0.51
EVA 3125+K/EVA R	160 A		-		45 kW	...202524	0.51
EVA 3160+K/EVA R	200 A		160 A		55 kW	...203026	0.51
EVA 3125+K/EVA Y/R	160 A		-		45 kW	...202531	0.51
EVA 3160+K/EVA Y/R	200 A		160 A		55 kW	...203033	0.51

Type	AC-21		AC-22	AC-23		EAN-Code	Weight kg
	400 V	415 V		400 V	415 V		
	Ie / A		Ie / A		P / kW	6419410...	
<b>3-pole</b>							
EVA 3200	200 A		200 A		75 kW	...203156	0.9
EVA 3250	250 A		250 A		90 kW	...203200	0.9
EVA 3200 R	200 A		200 A		75 kW	...203163	0.9
EVA 3250 R	250 A		250 A		90 kW	...203217	0.9
EVA 3200 LS/Vs	200 A		200 A		75 kW	...203170	0.9
EVA 3250 LS/Vs	250 A		250 A		90 kW	...203224	0.9
EVA 3200 R LS/Vs	200 A		200 A		75 kW	...203187	0.9
EVA 3250 R LS/Vs	250 A		250 A		90 kW	...203321	0.9
<b>4-pole</b>							
EVA 4200	200 A		200 A		75 kW	...203262	1.1
EVA 4250	250 A		250 A		90 kW	...203309	1.1
EVA 4200 R	200 A		200 A		75 kW	...203279	1.1
EVA 4250 R	250 A		250 A		90 kW	...203316	1.1
EVA 4200 LS/Vs	200 A		200 A		75 kW	...203286	1.2
EVA 4250 LS/Vs	250 A		250 A		90 kW	...203323	1.2
EVA 4200 R LS/Vs	200 A		200 A		75 kW	...203293	1.2
EVA 4250 R LS/Vs	250 A		250 A		90 kW	...203330	1.2

Data subject to change without notice