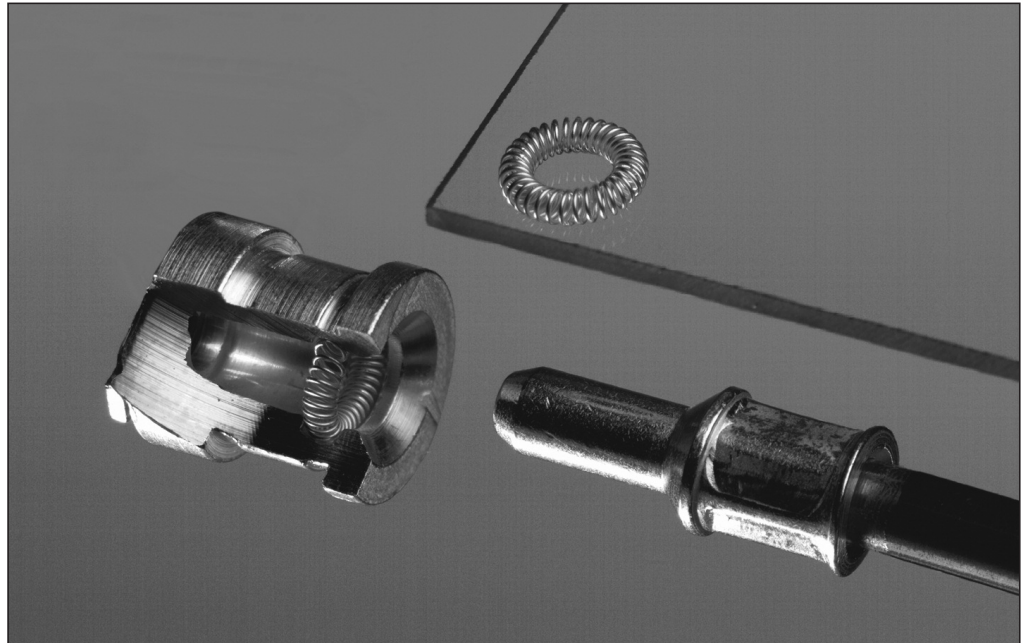


Introduction



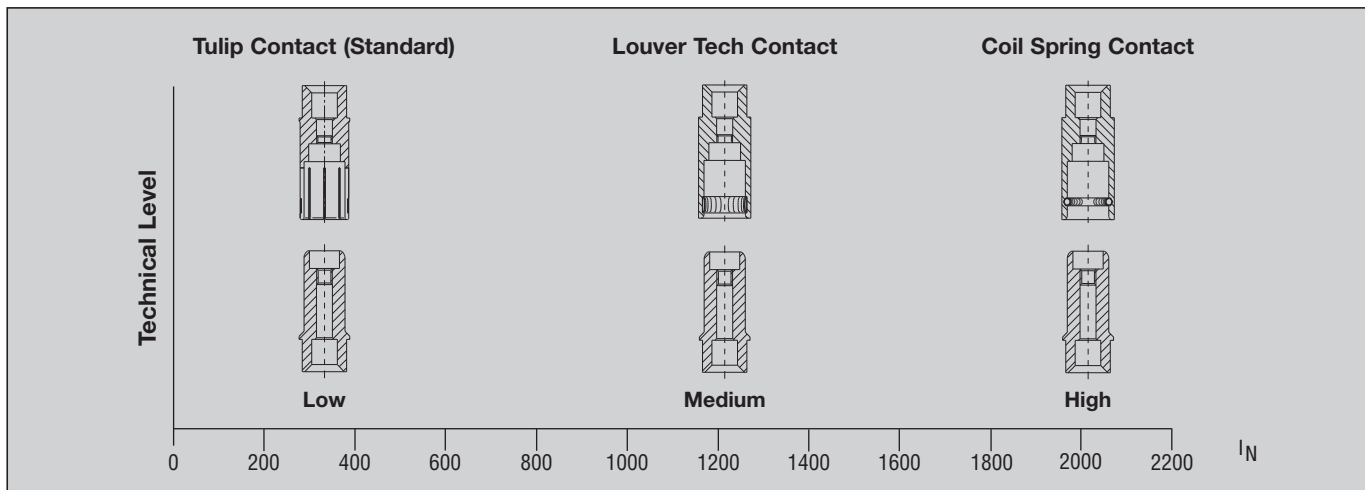
Silver Plated Power Contacts with Contact Springs for Maximum Performance in Exposed Applications



The demand for shortest possible periods of machine shut-downs and assembly times requires the use of connectors at the interfaces of the connector wires, as well as energy feeding and power circuits. To satisfy the demand of the various applications the series Power Connector was designed.

On the basis of the standard series HSB.6/35 (power supply up to 35 A, 6 poles) the development and the elaboration of this series is being continued rigorously as a result, almost any application up to current of 2,000 A can be realized by using a series of different power contacts.

Due to the modular structure the different varieties of customer requirements in this sector can be met. We also offer solutions for your application specific requirements.



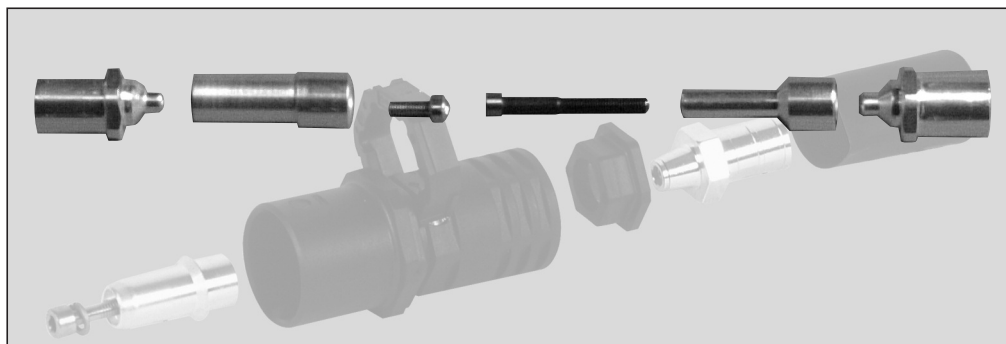
Coil Spring Power Contact



Coil Spring Power Contact

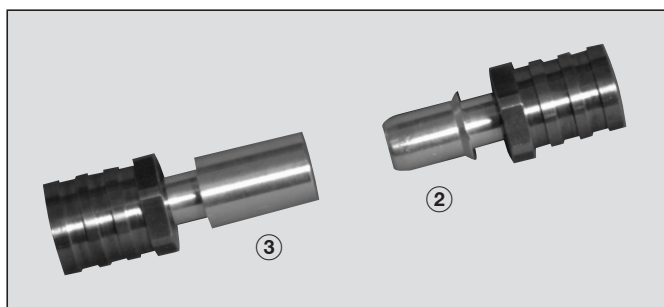


- ① Insulating Material Plastic
- ② Crimp Ferrule
- ③ Female Contact
- ④ Coil Spring
- ⑤ Male Contact



② Crimp Ferrule

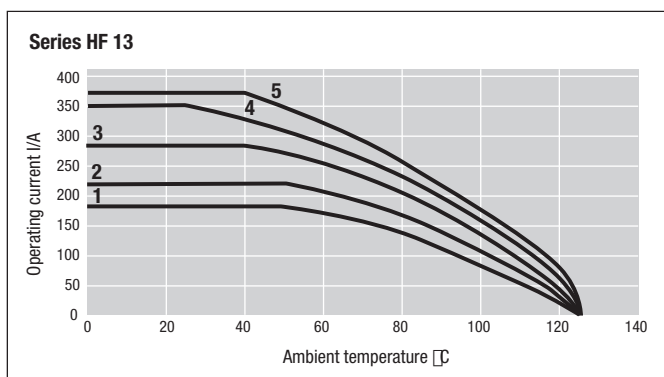
- Optimum material adaptation acc. to customer's application
- Adaptation to special customer wire size and crimping tools
- Same crimp ferrule for male, female and grounding contact
- Robust crimp ferrule for tough applications



② Male Contact

③ Female Contact

- Wear-resistant basic material
- Worn parts can be individually exchanged
- Surface coating according to customer application
- Reduced mating and pulling forces
- Vibration test
- High current capability through many contact points
- Variable wire termination



Derating Diagram

- Curve 1 = 35 mm²
- Curve 2 = 50 mm²
- Curve 3 = 70 mm²
- Curve 4 = 95 mm²
- Curve 5 = 105 mm²

HF-8 Module

HF-8 Module

Size 8

No. of Contacts

4

1000 V/250 A

IP 20

Male Insert incl. Pin Contact

Female Insert incl. Socket



Designation	Part Numbers	
	Male Insert	Female Insert
SET-HF.8Sti-Eins	1103039-1	-
SET-HF.8Bu-Eins	-	1103040-1
HF.06-CH-06 mm ² -SW17		1110952-1
HF.06-CH-10 mm ² -SW17		1110952-2
HF.06-CH-16 mm ² -SW17		1110952-3
HF.06-CH-25 mm ² -SW17		1110952-5
HF.06-CH-35 mm ² -SW17		1110952-7
HF.06-CH-50 mm ² -SW17		1110952-9
HF.06-CH-70 mm ² -SW17		1-1110952-0
HF.06-CH-120 mm ² -SW17		1103043-1*

Crimp Ferrules for Pin or Socket



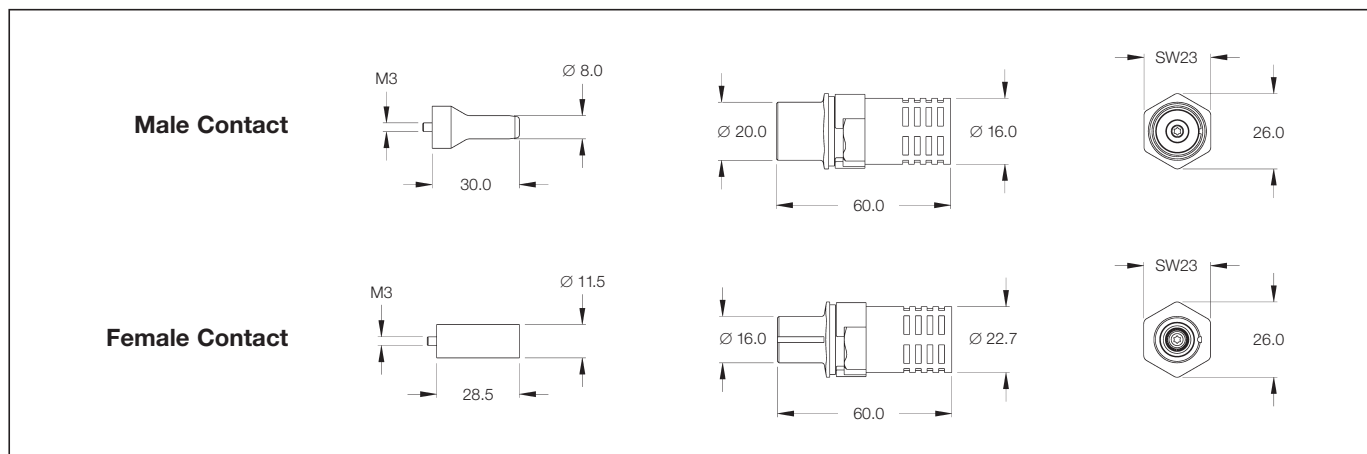
*) Please contact us.
Special Hoods are requested when Voltage Rate 1000 V is needed.

Adapter Plates



4 x Power Contacts
to be Mounted in
HF-8 Hood or Housing

	Top	Bottom
HF.8.4xHF.8.O	1103035-2	-
HF.8.4xHF.8.U	-	1103035-1



HF-13 Module

HF-13 Module

Size 8/12



No. of Contacts

2 + 1; 4 + 1 +

3 kV/350 A

Male Insert

Female Insert



Contact
for Power



Contact
for Grounding

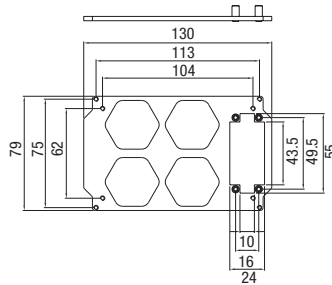


Designation	Part Numbers	
	Male Insert	Female Insert

HF.13.Sti.	1110950-2	–
HF.13.Bu.	–	1110951-2
HF.13.Sti.E	1110950-4	–
HF.13.Bu.E	–	1110951-4



3 x for Power
1 x for Earth
1 x for Signal (HA.10)
Assembly in HF.12 Housings



HF.12.3+PE+BG2

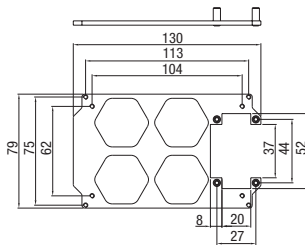
Top

Bottom

1110955-3	1110955-1
-----------	-----------



3 x for Power
1 x for Earth
1 x for Signal (HE.6)
Assembly in HF.12 Housings



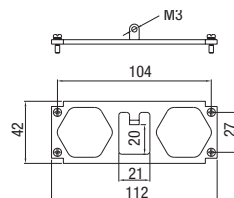
HF.12.3+PE+BG3

1110955-4

1110955-2



2 x for Power
1 x Signal
Assembly in HF.8 Housings



HF.8.2+BG1

1110960-2

1110960-1*

HF.8.2+BG1

–

1110960-3**

*) For Bottom Housing with 81 mm Height

***) For Bottom Housing with 20 mm Height

Crimping Sleeves

Crimping Sleeves

max. 150 A

Crimping Sleeves for Contact Series HF-08

Crimp Barrel for Pin/Socket Side

- Shrink Tube
- Crimp Barrel



Designation	Part Number
CH.06mm ² -SW17	1110952-1
CH.10mm ² -SW17	1110952-2
CH.16mm ² -SW17	1110952-3
CH.25mm ² -SW17	1110952-5
CH.35mm ² -SW17	1110952-7
CH.50mm ² -SW17	1110952-9
CH.70mm ² -SW17	1-1110952-0

Crimping Sleeves

max. 350 A

Crimping Sleeves for Contact Series HF-13

Crimp Barrel for Pin/Socket Side

- Shrink Tube
- Crimp Barrel
- Adapter



Designation	Part Number
CH.50mm ² -13/16mm	1110953-5
CH.70mm ² -13/16mm	1110953-6
CH.95mm ² -13/16mm	1110953-7
CH.105mm ² -13/16mm	1110953-8
CH.120mm ² -13/16mm	1110953-9
CH.150mm ² -13/16mm	1-1110953-1

Housings

HF-HIP-K 8/HF-EMV-K 8 HF-HIP-K 12/HF-EMV-K 12 Housings

Size 8/12

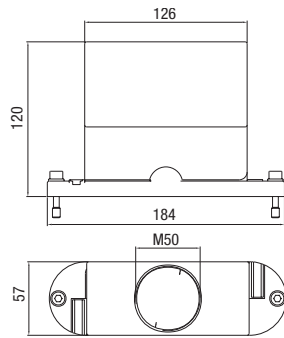
EMV: Protection against electro-magnetic interference, pressure-tight, Housings corrosion-resistant, black

HIP-K: Housings corrosion-resistant, black

Screw Lock on Hood

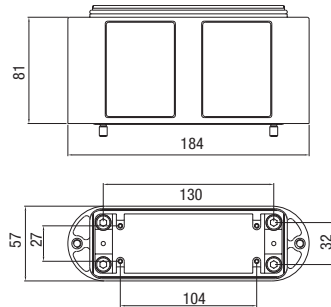
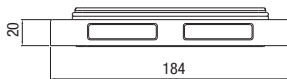
IP 68

Hood



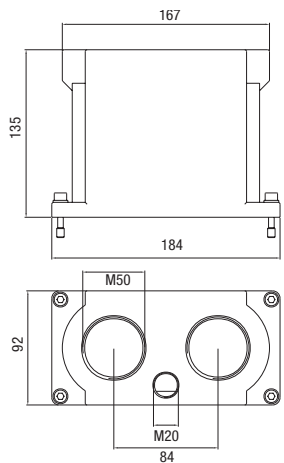
Metric	PG	Designation	Part Number
1xM50		HF-HIP-K.8.Sto.1.M50G	1102839-4
1xM50		HF.8.EMV-K.8.Sto.1.M50G	1102839-3
2xM40		HF.HIP-K.8.Sto.2.M40G	1102839-2
2xM40		HF.EMV-K.8.Sto.2.M40G	1102839-1

Housing Bottom



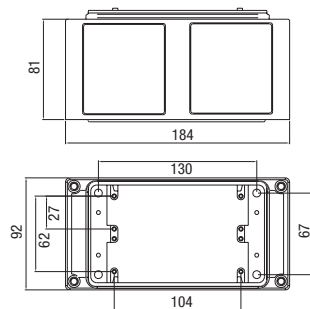
Height	Designation	Part Number
20 mm	HF-HIP-K.8.AG.N	1102837-2
20 mm	HF-EMV-K.8.AG.N	1102837-1
81 mm	HF-HIP-K.8.AG	1102836-2
81 mm	HF-EMV-K.8.AG	1102836-1

Hood



2xM40	HF-HIP-K.12.Sto.2.M40G	1102840-2
2xM40	HF-EMV-K.12.Sto.2.M40G	1102840-1
2xM50	HF-HIP-K.12.Sto.2.M50G	1102840-4
2xM50	HF-EMV-K.12.Sto.2.M50G	1102840-3

Housing Bottom



Height	Designation	Part Number
20 mm	HF-HIP-K.12.AG.N	1102838-2
20 mm	HF-EMV-K.12.AG.N	1102838-1
81 mm	HF-HIP-K.12.AG	1102192-2
81 mm	HF-EMVK-K.12.AG	1102192-1