

LOAD BREAK SWITCHES 630-800 A ROTARY SWITCHES LOADSAFE KU SERIES



- Reliable switch for demanding industrial applications
- Made of 100% recyclable thermoplastic material
- The modular structure enables the drive mechanism position to be varied, mention when ordering
- Easy to install auxiliary contacts (1.V160KU & 2.V160KU)
- Available with terminal covers (LS800F & LS800H) and phase barriers (VS800)
- Available with direct handle (Operation = Direct handle); or handle (LKX 150) and shaft (LVK=228, 228mm shaft) (Operation = Rotary)
- Available with yellow/red handle (LKX 150 Y/R) and different length shaft when ordered separately



reddot winner 2021
industrial design

Made of recyclable halogen-free V0 plastic and next generation modular design. LoadSafe KU 200-800 A range was awarded with Red Dot (2021) industrial product design award

SWITCHES

| Type | EAN | E-number | AC-23A 400/415 V (A) | AC-23A 400/415 V (kW) | AC-23A 690 V (A) | AC-23A 690 V (kW) | Weight (kg) | Operation | Switch Type | Number of Poles |
|----------------------------------|---------------|----------|----------------------|-----------------------|------------------|-------------------|-------------|-----------------|-------------------|-----------------|
| External handle and shaft | | | | | | | | | | |
| KU 3630 | 6419410483626 | 3602826 | 630 | 355 | 630 | 630 | 4,545 | External handle | Load Break Switch | 3 |
| KU 3800 | 6419410483633 | 3602827 | 800 | 400 | 800 | 800 | 4,545 | External handle | Load Break Switch | 3 |
| KU 4630 | 6419410483640 | 3602828 | 630 | 355 | 630 | 630 | 5,645 | External handle | Load Break Switch | 4 |
| KU 4800 | 6419410483657 | 3602829 | 800 | 400 | 800 | 800 | 5,645 | External handle | Load Break Switch | 4 |
| KU 6630 | 6419410483664 | 3602842 | 630 | 355 | 630 | 630 | 8,985 | External handle | Load Break Switch | 6 |
| KU 6800 | 6419410483671 | 3602843 | 800 | 400 | 800 | 800 | 8,985 | External handle | Load Break Switch | 6 |
| KU 8630 | 6419410483688 | 3602844 | 630 | 355 | 630 | 630 | 11,185 | External handle | Load Break Switch | 8 |
| KU 8800 | 6419410483695 | 3602845 | 800 | 400 | 800 | 800 | 11,185 | External handle | Load Break Switch | 8 |
| Direct handle | | | | | | | | | | |
| KU 3630SV | 6419410483992 | 3602883 | 630 | 355 | 630 | 630 | 4,545 | Direct handle | Load Break Switch | 3 |
| KU 3800SV | 6419410484005 | 3602884 | 800 | 400 | 800 | 800 | 4,545 | Direct handle | Load Break Switch | 3 |
| KU 4630SV | 6419410484012 | 3602885 | 630 | 355 | 630 | 630 | 5,645 | Direct handle | Load Break Switch | 4 |
| KU 4800SV | 6419410484029 | 3602886 | 800 | 400 | 800 | 800 | 5,645 | Direct handle | Load Break Switch | 4 |

RELATED ACCESSORIES

| Type | Accessory | Description | For | EAN | E-number |
|-------------|-------------------|----------------------------|--|---------------|----------|
| 1.V160KU | Auxiliary contact | 1NO/1NC | For all configurations | 6419410300022 | 3600819 |
| 2.V160KU | Auxiliary contact | 2NO/2NC | For all configurations | 6419410300114 | 3600825 |
| LVK=228 | Shaft | Length 228 mm, steel | Delivered with external handle | 6419410221440 | 3600348 |
| LKX 150 | Handle | Black handle | Delivered as external handle | 6419410483572 | 3602851 |
| LKX 150 Y/R | Handle | Yellow/red handle | Option as external handle | 6419410483602 | 3602853 |
| LS800F | Terminal cover | Terminal cover, low model | Use with regular cable connectors | 6419410484487 | 3602913 |
| LS800H | Terminal cover | Terminal cover, high model | Use with vertical (VB & VM) cable connectors | 6419410484494 | 3602914 |
| VS800 | Phase barrier | Phase barrier | For all configurations | 6419410483756 | 3602856 |
| ALK800 | Spreader | 1 pcs | 3 and 4-pole | 6419410205884 | 3602982 |
| ALK800C | Spreader | 1 pcs | 3-pole | 6419410205877 | 3602983 |



All connectors and more information available in KATKO ConnectSafe Catalogue. You will find it here: www.katko.com/downloads

Attention! Cable connectors must be used with Al-cables. With Cu-cables cable connector usage is optional. Other connectors may be compatible, ask for more options.

CABLE CONNECTORS - SUGGESTIONS PER CABLE CROSS SECTION

| 630 - 800 A, Al cable | TOP | | | BOTTOM | | |
|---------------------------------|------------|------------|------------|------------|------------|------------|
| Terminal position | 1L1 | 3L2 | 5L3 | 2T1 | 4T2 | 6T3 |
| 2,5 - 50 mm ² | | | | | | |
| Connector | KKL2x50 | KKL2x50 | KKL2x50 | KKL2x50 | KKL2x50 | KKL2x50 |
| Terminal cover | LS800F | LS800F | LS800F | LS800F | LS800F | LS800F |
| 70 - 95 mm ² | | | | | | |
| Connector | KKL1x95 | KKL1x95 | KKL1x95 | KKL1x95 | KKL1x95 | KKL1x95 |
| Terminal cover | LS800F | LS800F | LS800F | LS800F | LS800F | LS800F |
| 120 - 150 mm ² | | | | | | |
| Connector, option 1 | KKL1x150 | KKL1x150 | KKL1x150 | KKL1x150 | KKL1x150 | KKL1x150 |
| Connector, option 2 | KKL2x150VM | KKL2x150VM | KKL2x150VM | KKL2x150VM | KKL2x150VM | KKL2x150VM |
| Connector, option 3 | KKL2x150VB | KKL2x150VB | KKL2x150VB | KKL2x150VB | KKL2x150VB | KKL2x150VB |
| Connector, option 4 | KLH2x150 | KLH2x150 | KLH2x150 | KLH2x150 | KLH2x150 | KLH2x150 |
| Terminal cover for option 1 | LS800F | LS800F | LS800F | LS800F | LS800F | LS800F |
| Terminal cover for option 2 & 3 | LS800H | LS800H | LS800H | LS800H | LS800H | LS800H |
| Terminal cover for option 4 | - | - | - | - | - | - |
| 185 - 240 mm ² | | | | | | |
| Connector, option 1 | KKL1x240 | KKL1x240 | KKL1x240 | KKL1x240 | KKL1x240 | KKL1x240 |
| Connector, option 2 | KKL2x240VM | KKL2x240VM | KKL2x240VM | KKL2x240VM | KKL2x240VM | KKL2x240VM |
| Connector, option 3 | KKL2x240VB | KKL2x240VB | KKL2x240VB | KKL2x240VB | KKL2x240VB | KKL2x240VB |
| Connector, option 4 | KLH2x240 | KLH2x240 | KLH2x240 | KLH2x240 | KLH2x240 | KLH2x240 |
| Terminal cover for option 1 | LS800F | LS800F | LS800F | LS800F | LS800F | LS800F |
| Terminal cover for option 2 & 3 | LS800H | LS800H | LS800H | LS800H | LS800H | LS800H |
| Terminal cover for option 4 | - | - | - | - | - | - |
| 300 mm ² | | | | | | |
| Connector, option 1 | KKL1x300 | KKL1x300 | KKL1x300 | KKL1x300 | KKL1x300 | KKL1x300 |
| Connector, option 2 | KKL2x300VM | KKL2x300VM | KKL2x300VM | KKL2x300VM | KKL2x300VM | KKL2x300VM |
| Connector, option 3 | KKL2x300VB | KKL2x300VB | KKL2x300VB | KKL2x300VB | KKL2x300VB | KKL2x300VB |
| Connector, option 4 | KLH2x300 | KLH2x300 | KLH2x300 | KLH2x300 | KLH2x300 | KLH2x300 |
| Terminal cover for option 1 | LS800F | LS800F | LS800F | LS800F | LS800F | LS800F |
| Terminal cover for option 2 & 3 | LS800H | LS800H | LS800H | LS800H | LS800H | LS800H |
| Terminal cover for option 4 | - | - | - | - | - | - |

TECHNICAL DATA

| LOAD BREAK SWITCHES | KU ROTARY LBS | | |
|---|---------------|-------|-------|
| | 630A | 800A | |
| Rated insulation voltage, U_i (V) | 1000 | 1000 | |
| Rated thermal current, I_{th} (A) | 630 | 800 | |
| Nominal values with cable size (mm ²) | 2x185 | 2x240 | |
| Rated operational current, I_n (A) | | | |
| AC-21A | 400/415V | 630 | 800 |
| | 500V | 630 | 800 |
| | 690V | 630 | 800 |
| AC-22A | 400/415V | 630 | 800 |
| | 500V | 630 | 800 |
| | 690V | 630 | 800 |
| AC-23A | 400/415V | 630 | 800 |
| | 500V | 630 | 800 |
| | 690V | 630 | 800 |
| | 1000V | - | 400 |
| Rated operational power for 3-phase (1500 r.p.m.) squirrel cage induction motors (kW) | | | |
| AC-23 | 400/415V | 355 | 400 |
| | 500V | 400 | 560 |
| | 690V | 630 | 800 |
| Rated fused short circuit current | | | |
| Back-up fuse (A) | 630 | 800 | |
| R.M.S. value, I_k (kA) | 100 | 100 | |
| Peak value (kA) | 76 | 76 | |
| Impulse withstand voltage, U_{imp} (kV) | 12 | 12 | |
| Rated short circuit making capacity, I_{cm} (kA) | | | |
| | 690V | 60 | 60 |
| Rated short time withstand current (1 s), I_{sw} (kA) | | | |
| | 690V | 28*** | 28*** |
| Rated breaking capacity, I_{bn} (A) | | | |
| AC-23 | 400/415V | 5040 | 6400 |
| | 500V | 5040 | 6400 |
| | 690V | 5040 | 6400 |
| Electrical endurance (number of operations) | 2000 | 2000 | |
| Mechanical endurance (number of operations) | 10000 | 10000 | |
| Terminals / Bolt size Cu (mm ²) | M12 | M12 | |
| Max terminal torque (Nm) | 50-75 | 50-75 | |
| *** 1000V | | | |

6 AND 8-POLE CONFIGURATIONS

- 6 and 8 -pole configurations are factory assembled and cannot be self-assembled. 6 and 8 -pole configurations are always supplied with an external handle and a shaft.

CONNECTORS

| Type | EAN | E-NO |
|------------|---------------|---------|
| KKL2x50 | 6419410378588 | 1942088 |
| KKL1x95 | 6419410200230 | 1942129 |
| KKL1x150 | 6419410378618 | 1942091 |
| KKL2x150VM | 6419410484302 | 1942111 |
| KKL2x150VB | 6419410484319 | 1942112 |
| KLH2x150 | 6419410358580 | 1942117 |
| KKL1x240 | 6419410378632 | 1942093 |
| KKL2x240VM | 6419410484326 | 1942113 |
| KKL2x240VB | 6419410484333 | 1942114 |
| KLH2x240 | 6419410358597 | 1942118 |
| KKL1x300 | 6419410484289 | 1942109 |
| KKL2x300VM | 6419410484340 | 1942115 |
| KKL2x300VB | 6419410484357 | 1942116 |
| KLH2x300 | 6419410358603 | 1942119 |

KATKO ConnectSafe Catalogue.
www.katko.com/downloads

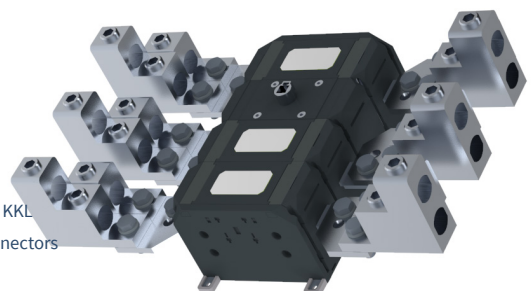


Image:
KU 3800
with ALK800 spreaders and KKL
1x300 and KKL2x300VB connectors